



# AVVOLGITUBO serie 804-805

**BEST SELLER**

804



805



ISO EN 12100



2006/42/CE

caratteristiche tecniche

- Tubo KPU.
- Struttura in tecnopolimero.
- Staffa di fissaggio metallica, orientabile.
- Dispositivo automatico di arresto del tubo alla lunghezza desiderata.  
Questo dispositivo è facilmente disinseribile, qualora si voglia il tubo costantemente in trazione.
- Disponibili in colore giallo o grigio silver.

optional

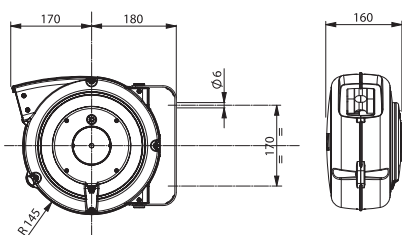
ART. 949/804-4000

ART. 949/805-7000

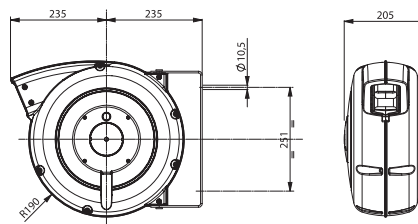
- Dispositivo opzionale per rendere fisso, anzichè orientabile






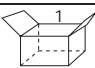
l'avvolgitubo. Indispensabile per l'applicazione a soffitto.

quote di ingombro 804



quote di ingombro 805



					
Art. SILVER	804/8/S	804/10/S	805/8/S	805/10/S	805/13/S
					
Art. GIALLO	804/8	804/10	805/8	805/10	805/13
Ø interno tubo	8 mm (5/16")	10 mm (3/8")	8 mm (5/16")	10 mm (3/8")	12,5 mm (1/2")
lunghezza tubo (m)	10	8	16	16	11
press. max	15 bar	15 bar	15 bar	15 bar	15 bar
raccordo in uscita	1/4" M	3/8" M	1/4" M	3/8" M	1/2" M
temperatura	-5°/+50° C		-5°/+50° C		
raccordo in entrata	NO		NO		
spezzone ingresso	1,5 m		1,5 m		
aria	SI		SI		
acqua	SI		SI		
tipo tubo	KPU		KPU		
	44		20		
	mm 360x310x185 Kg 4		mm 430x400x210 Kg 7		